



Music Basics (part 2)

Name _____
www.staleyband.org

NAMING THE STAFF

INTRODUCTION: The bass clef and the treble clef have different names for each line and space in the staff. Once you know the names of the lines and spaces you can start to learn the note names!

- ❶ I play the _____, which uses the _____ clef.
- ❷ The lines and spaces of the staff always start at the _____. (number the diamonds)
- ❸ Line 1 of the staff is named _____. All notes placed on this line are called _____.
- ❹ Space 1 of the staff is named _____. All notes placed on this space are called _____.
- ❺ Going _____ the staff uses the **FORWARD** musical alphabet. (ABCDEFGGABCDE...)
- ❻ Going _____ the staff uses the **BACKWARD** musical alphabet. (GFEDCBAGFEDC...)

Another way to remember the names of the staff are by remembering the following saying:

Lines: _____

Spaces: _____

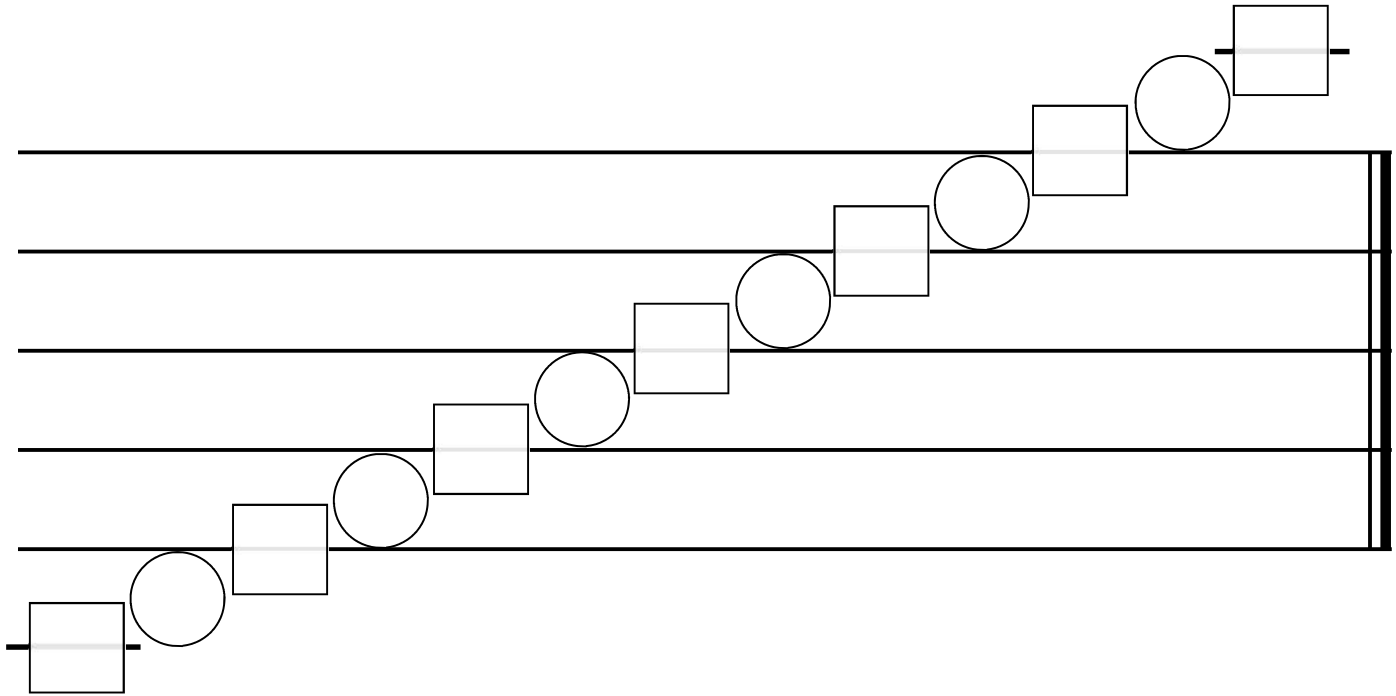
★ If you know this note you can figure out ANY note on your staff no matter how high or how low it goes!

LEDGER LINES:

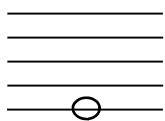
There are notes that are higher and lower than the staff allows. To write these notes we need to extend the staff by using **LEGER LINES**. When you see a small line on or below a note, just pretend that the staff keeps going up or down. All instruments use leger lines as they can all play more than nine notes! It is easy to figure out what notes are on the leger lines if you know your musical alphabet!

PENCIL PRACTICE:

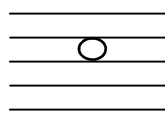
Use the musical alphabet to figure out what the ledger line notes are. Remember going up the staff is **FORWARD** in the musical ABC's, going down the staff is **BACKWARD** musical ABC's.



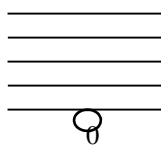
LABEL THE NOTES (WRITE THE NOTE NAMES UNDERNEATH)



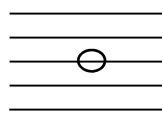
1) _____



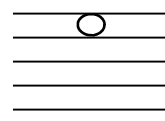
2) _____



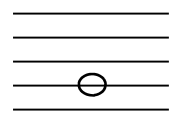
3) _____



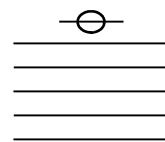
4) _____



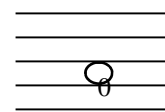
5) _____



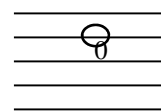
6) _____



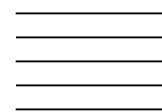
7) _____



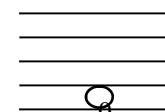
8) _____



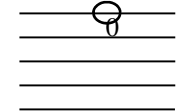
9) _____



10) _____



11) _____



12) _____